



**WORLD'S BEST
ALLOY BULLBARS**

East Coast Bullbars (ECB Pty Ltd)

Tel: 07 3897 5700

Fax: 07 3283 1168

ecb@ecb.com.au www.ecb.com.au

29 Snook St
Clontarf QLD 4019
Australia

Po Box 122
Margate QLD 4019
Australia

BT31SY

REPLACES: 11.04.12
REVISED: 23.01.18

FITTING INSTRUCTIONS

TOYOTA KLUGER 10/10 ON BIG TUBE™ BAR WITH FOG LAMPS VEHICLE FRONTAL PROTECTION SYSTEM (VFPS) FOR AIR BAG AND ADR COMPLIANT VEHICLES

Check installation hardware before commencing.

Special requirements:

- If vehicle not fitted with original bumper lights, an auxiliary wiring harness (not supplied, can be purchased from ECB ASLWIRING) will be required to wire the lights supplied to the vehicles low beam light circuit.

1. Lift Bonnet
2. Remove grille fill panel from between headlamps and radiator support. (Eleven Plastic push pull clips)
3. Remove grille. Six plastic push pull clips. Pull forward and slide hand to bottom of grille. Working from the side, unclip by releasing centre of clip from bumper. **See Figure 1.**
4. Remove bumper cover. One 8mm head screw and one plastic clip (per side), eight 10mm head screws from under front of vehicle to splash guards and three plastic clip from under grille. Gently pull top of bar away from guard of vehicle to unclip from guard retaining clip.
5. Remove polystyrene bumper support.
6. Remove six 14mm head bolts from inside of alloy intrusion bar. Remove intrusion bar.
7. Remove two 10mm head bolts and two push pull plastic clips from centre splash guard. Allow to hang.
8. Fit steel mounting brackets (supplied) with 4mm steel section over rear of alloy intrusion bar. Measure inside to inside of 8mm alloy mounts on ECB protection bar and align steel mounts evenly on intrusion bar using measurement to outside of external steel mount. **See Figure 2.**
9. Mark and drill centre holes on rear and underside of mount. Exterior holes will align with standard holes for chassis mounting. Fit 3/8 x 1 ¼ bolt and washer on wire, washer, spring washer and nut (supplied) through rear hole on mount and 3/8 nut and washer on wire, flat washer, spring washer and 3/8 x 1 bolt (supplied) to lower hole. **FINGER TIGHTEN ONLY.**
10. Refit alloy intrusion bar to vehicle using M10 x 1.25 x35 bolts, flat washers and spring washers (supplied) Centre bar and **TIGHTEN ALL BOLTS. See figure 3.** Using mount as a guide drill two 10mm holes into radiator support. **CAUTION: RADIATOR IS DIRECTLY ABOVE DRILL POINTS. DO NOT PUNCTURE. Treat drilled holes with paint or rust proofing.** Fit using 3/8 nut and washer on wire, flat washers, spring washers and 3/8 x 1 ¼ bolts (supplied). **TIGHTEN ALL BOLTS.** Cut excess wire from bolts and nuts and crimp to panelling to avoid rattling. **See Figure 3.**
11. Measure Template 1 to check sizing. (Sizing may vary, depending on printer settings used). Using sharp scissors cut out **Template 1 (supplied)**. Place the template into the bottom corner of the lower plastic grille of the bumper. Trim the lower plastic grille as per the cut out in the template. Reverse the template to cut out the other side. **See Figures 4 and 5.**



**WORLD'S BEST
ALLOY BULLBARS**

East Coast Bullbars (ECB Pty Ltd)

Tel: 07 3897 5700

Fax: 07 3283 1168

ecb@ecb.com.au www.ecb.com.au

29 Snook St
Clontarf QLD 4019
Australia

Po Box 122
Margate QLD 4019
Australia

12. Remove original fog lights from bumper, two PK screws per light (if fitted). Leave with customer for possible refit at later date should protection bar be removed.
13. Disconnect indicator and parking light from rear of headlight. Connect ECB Quick Click indicator / park light harness to original wiring loome. Connect other side of ECB Quick Click indicator / park light harness to appropriate connectors on headlight. Run ECB Quick Click indicator / park light harness under headlight. Ensure harness is clear of moving parts and sharp edges as damage may occur.
14. Splice fog lamps into original wiring loome. Use cable locks (supplied). For vehicles without original bumper lights, wire in auxiliary harness and switch to vehicles low beam circuit.
15. Refit original equipment as per reverse of steps 2 to 4 (Do not refit polystyrene to rear of bumper cover). Feed ECB wiring thru hole left by original equipment bumper light (Do not refit under body splash guard at this time). Check all wiring is tradesman like and will not rub through on any metal.
16. Fit ECB LED indicator / park lights (supplied) into protection bar as per instructions supplied with the LED indicator kit. **NOTE: Ensure park light is to outside. See Figure 6.**
17. Attach ECB fog lights to protection bar. Place M6 x 20 bolts, spring washers (supplied) through light mount from inside and attach nut to top. Slide assembly into light mount in Protection bar and centralize light to hole. **TIGHTEN FIRM ONLY.**
18. Attach ECB 6mm clip lock trim (supplied) to rear of protection bar. **NOTE:** Trim off lower edge on an angle so trim will sit flush with end of protection bar. **See Figures 8, 9 and 10.** Attach 3mm clip lock trim (supplied) to tow hook cut outs in skirt. **See Figure 11.**
19. Remove external skirt vents from bar before fitment to allow access to bolts. Install ECB protection bar to outside of steel mounting system so the helper plate sits flat on top of the mount. This will hold the bar in position while you install the ½ x 1 ½ bolts, nuts, flat washers and spring washers (supplied). Use locking pliers (Vice Grips) or similar on mounts to hold in position when fitting bolts (if required). **FINGER TIGHTEN ONLY.**
20. Align protection bar with vehicle. **TIGHTEN ALL BOLTS AND NUTS. See Figure 12 and 13** for side and front view.
21. Connect ECB indicator / park lights and **CHECK OPERATION.**
22. Connect ECB fog lights and **CHECK OPERATION.**
23. Aim ECB fog lights with low beam. **TIGHTEN IN POSITION.**
24. Refit skirt vents to bar. **Ensure these are fully clipped in place on upper and lower edges.**
25. Refit under body splash guard to vehicle.

ENSURE NUMBER PLATE IS CLEARLY VISABLE

Note: When fitting/refitting the licence plate to the vehicle, ensure there is no obstruction to licence plate vision in accordance with local authorities. If required relocate licence plate to an alternate location.



East Coast Bullbars (ECB Pty Ltd)

Tel: 07 3897 5700

Fax: 07 3283 1168

ecb@ecb.com.au www.ecb.com.au

29 Snook St
Clontarf QLD 4019
Australia

Po Box 122
Margate QLD 4019
Australia

**WORLD'S BEST
ALLOY BULLBARS**

Further VFPS Notes:

- a) Do not attach VFPS to the vehicle using anchorages not intended for this purpose (e.g. engine mounting bolts).
- b) Do not use this product for any vehicle make or model, other than those specified by the VFPS manufacturer.
- c) Do not remove the plaque or label from the VFPS.
- d) Do not modify the structure of the VFPS in any way.
- e) No accessory or fitment should project forward of the VFPS forward profile.
- f) **ENSURE THESE INSTRUCTIONS ARE LEFT WITH VEHICLE OWNER AND/OR OPERATOR.**

IMPORTANT INFORMATION

Periodically check bolts and nuts for correct tightness, especially if travelling on rough roads

FITTING KIT

1 – Pair steel mounting brackets.	2 – 3/8 x 1 bolts
6 – M10 x 1.25 x 35 bolts	2 – M6 x 20 bolts.
14 – M10 Spring Washers	2 – M6 nuts
14 – M10 Flat Washers	2 – M6 flat washers.
6 – ½ x 1 ½ bolts	2 – M6 spring washers
6 – ½ nuts	1 – ECB LED Indicator / Park light kit
6 – ½ spring washers	1 – ECB Quick Click Harness (IC10KLUGECEB100H)
12 – ½ flat washers	1 – Fog light kit – 35 Watt globes
4 – 3/8 x 1 ¼ bolts	2 – Fog light trims
2 – 3/8 x 1 ¼ bolts and washers on 300mm wire	4 – Cable locks
6 – 3/8 nuts and washers on 300mm wire	1 – 2500mm length 6mm clip lock
2 – 3/8 nuts	2 – 300mm length 3mm clip lock



Figure 1: Lower view of grille clip. Push centre up

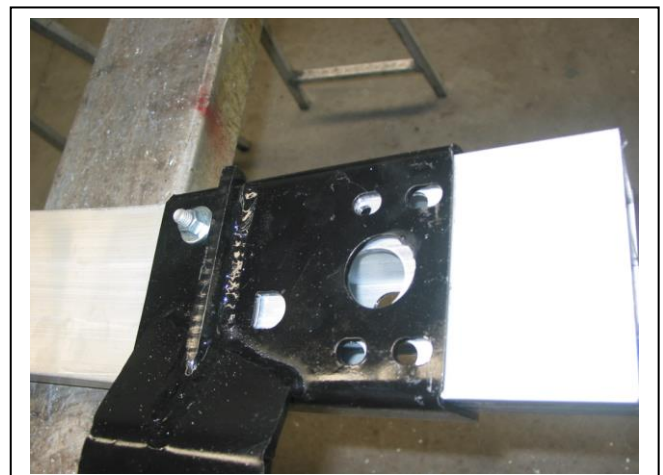


Figure 2: Steel mount attached to Alloy intrusion bar as fitted to test vehicle.



East Coast Bullbars (ECB Pty Ltd)

Tel: 07 3897 5700

Fax: 07 3283 1168

ecb@ecb.com.au www.ecb.com.au

29 Snook St
Clontarf QLD 4019
Australia

Po Box 122
Margate QLD 4019
Australia

WORLD'S BEST
ALLOY BULLBARS

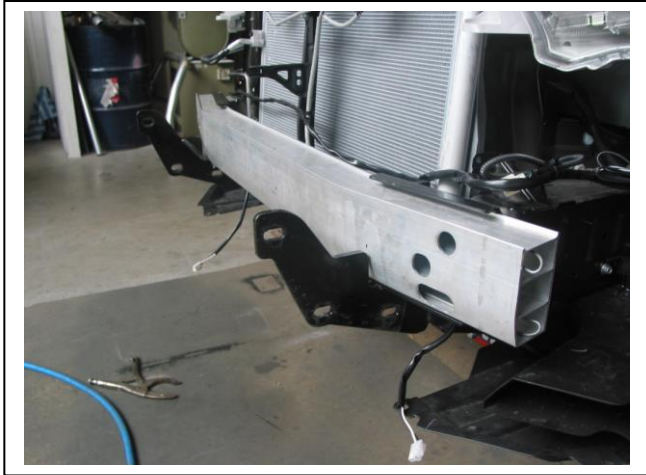


Figure 3: Steel mount fitted to vehicle

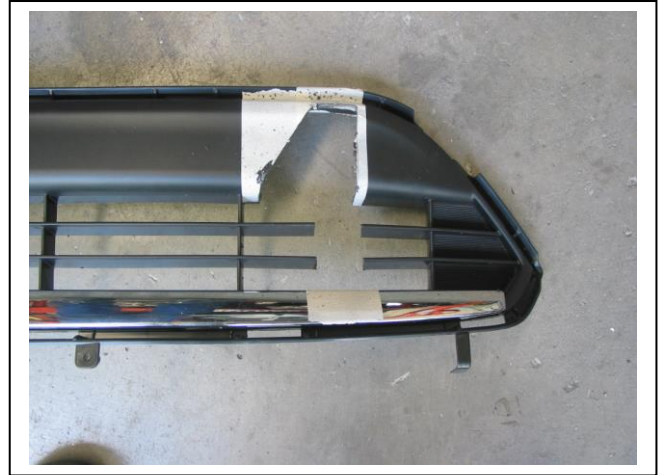
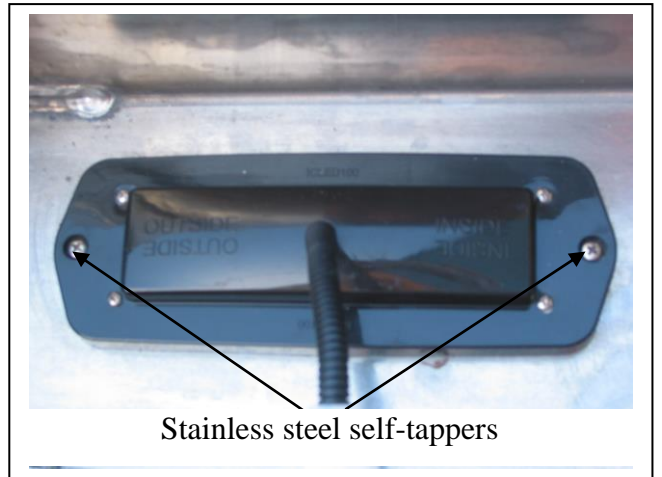


Figure 4: Cut out in plastic bumper.
Driver's side shown

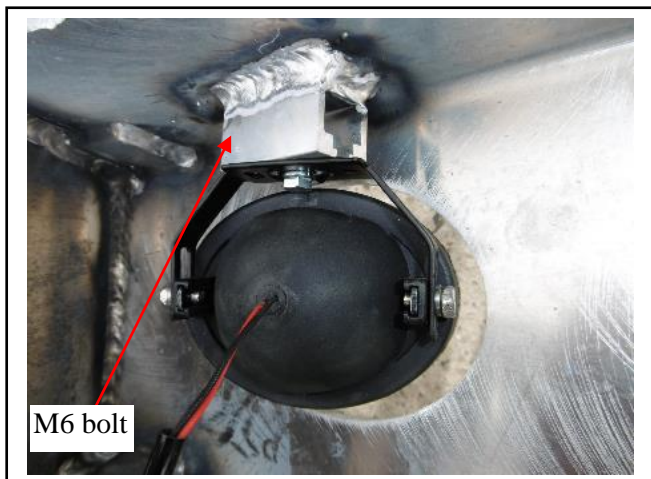


Figure 5: Cut out in plastic bumper with steel mounting bracket and grille fitted to vehicle



Stainless steel self-tappers

Figure 6



M6 bolt

Figure 7



Figure 8: Clip lock trim



East Coast Bullbars (ECB Pty Ltd)

Tel: 07 3897 5700

Fax: 07 3283 1168

ecb@ecb.com.au www.ecb.com.au

WORLD'S BEST
ALLOY BULLBARS

29 Snook St
Clontarf QLD 4019
Australia

Po Box 122
Margate QLD 4019
Australia



Figure 9: Cut end to match channel end



Figure 10: Clip lock beside tube gussets



Figure 11: 3mm clip lock



Figure 12: Front view

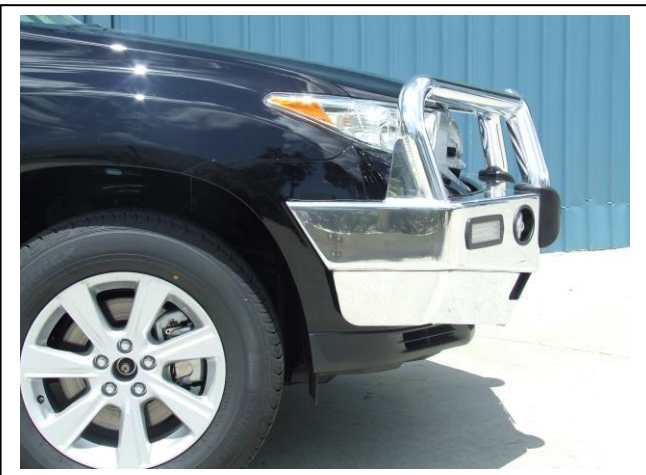


Figure 13: Side view



**WORLD'S BEST
ALLOY BULLBARS**

East Coast Bullbars (ECB Pty Ltd)

Tel: 07 3897 5700

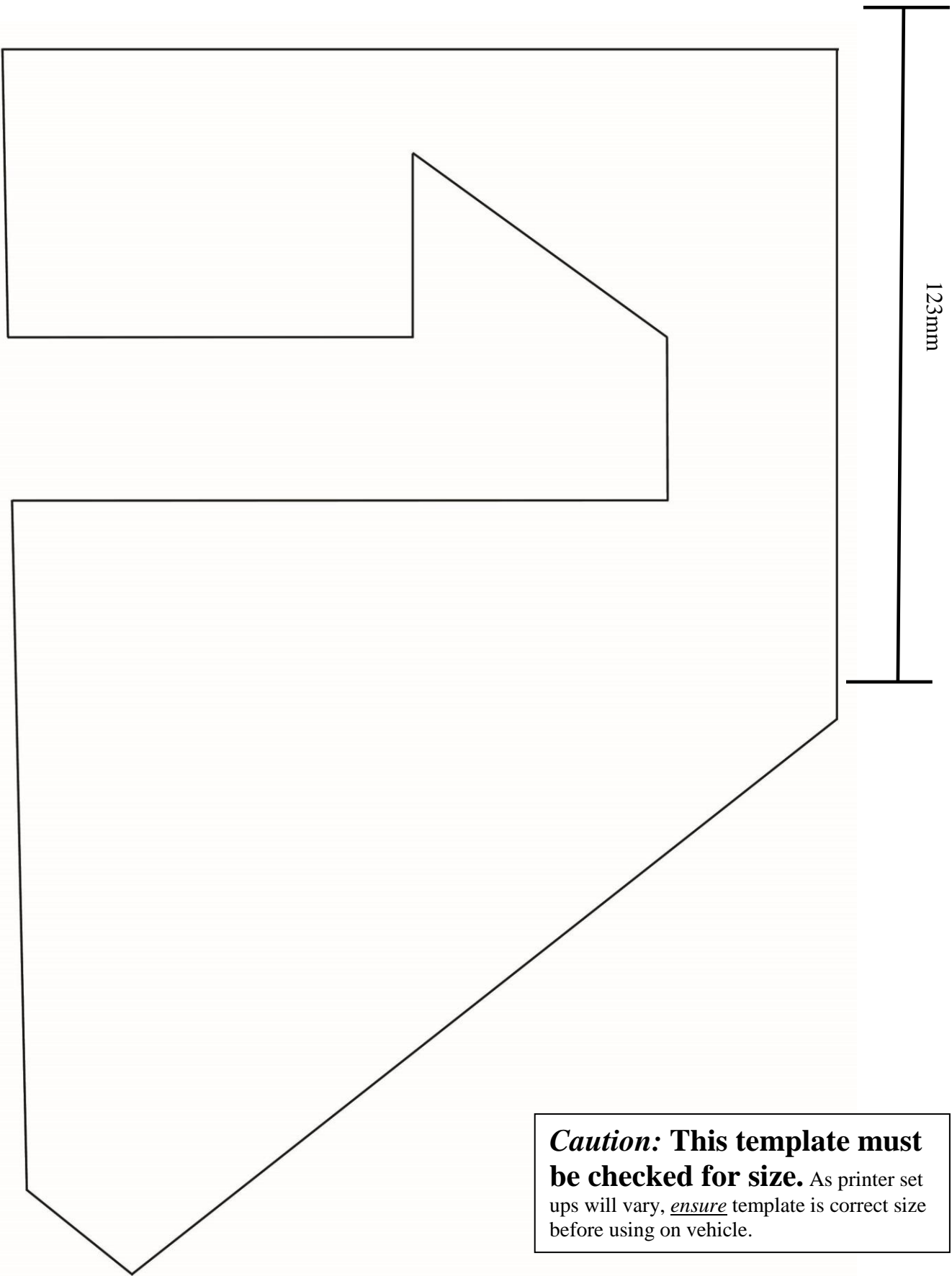
Fax: 07 3283 1168

ecb@ecb.com.au www.ecb.com.au

29 Snook St
Clontarf QLD 4019
Australia

Po Box 122
Margate QLD 4019
Australia

Template 1



Caution: This template must be checked for size. As printer set ups will vary, *ensure* template is correct size before using on vehicle.



**WORLD'S BEST
ALLOY BULLBARS**

East Coast Bullbars (ECB Pty Ltd)

Tel: 07 3897 5700

Fax: 07 3283 1168

ecb@ecb.com.au www.ecb.com.au

29 Snook St
Clontarf QLD 4019
Australia

Po Box 122
Margate QLD 4019
Australia



**WORLD'S BEST
ALLOY BULLBARS**

East Coast Bullbars (ECB Pty Ltd)

Tel: 07 3897 5700

Fax: 07 3283 1168

ecb@ecb.com.au www.ecb.com.au

29 Snook St
Clontarf QLD 4019
Australia

Po Box 122
Margate QLD 4019
Australia

We value your comments

Dear Fitter,

ECB would like to know how you went with the installation of this product. We value your comment and may need to contact you to clarify some details so please complete your contact details clearly.

We would appreciate if you could complete as many of the following details as possible.

Your Name:	Your contact No.
Product Part No.	Product Invoice No.
Product Description:	Make, model, and year of vehicle:
Product Work Order No.	Company your from/Company product purchased from:

Date of fitment: ____/____/____

Was the fitting hardware supplied complete?

Yes

No

If no what was not supplied

Did the installation go well?

Yes

No

Please provide comments

Please draw diagrams if you need to.

Post to
Reply Paid 122
PO Box 122
Margate QLD 4019

Fax to
(07) 3283 1168



**WORLD'S BEST
ALLOY BULLBARS**

East Coast Bullbars (ECB Pty Ltd)

Tel: 07 3897 5700

Fax: 07 3283 1168

ecb@ecb.com.au www.ecb.com.au

29 Snook St
Clontarf QLD 4019
Australia

Po Box 122
Margate QLD 4019
Australia



East Coast Bullbars (ECB Pty Ltd)

Tel: 07 3897 5700

Fax: 07 3283 1168

ecb@ecb.com.au www.ecb.com.au

29 Snook St
Clontarf QLD 4019
Australia

Po Box 122
Margate QLD 4019
Australia

WORLD'S BEST
ALLOY BULLBARS

DESPATCH CHECKLIST BT31SY

ICZBKCT31



Work Order #		See other side of this page for photos of all mounts
Finish:		
Transport:		
Due Date:		

- 1 – Pair steel mounting brackets
- 1 – Bolt kit.
- 1 – ECB LED Indicator / Park light kit.
- 1 – ECB Quick Click harness (**IC10KLUGECEB100H**)
- 1 – Fog light kit. **Low wattage globe maximum 35Watt**
- 2 – Fog light trims.
- 1 – 2500mm length 6mm black clip lock.
- 2 – 300mm lengths 3mm black clip lock.
- 1 – Pair ECB trimmed overrides – **Fitted to Bar**
- 3 – 6mm air scoops – **Fitted to Bar – Logo at bottom**
- 4 – 3mm air scoops – **Fitted to Bar**



Is this product “the best it can be” Yes _____/_____
Wrapper's initials / Checker initials

If **NO** fix before continuing

All parts checked and completed by:

Nut and bolts: _____ Date __/__/__

Order control: _____ Date __/__/__

Final wrap check: _____ Date __/__/__



East Coast Bullbars (ECB Pty Ltd)

Tel: 07 3897 5700

Fax: 07 3283 1168

ecb@ecb.com.au www.ecb.com.au

29 Snook St
Clontarf QLD 4019
Australia

Po Box 122
Margate QLD 4019
Australia

WORLD'S BEST
ALLOY BULLBARS

